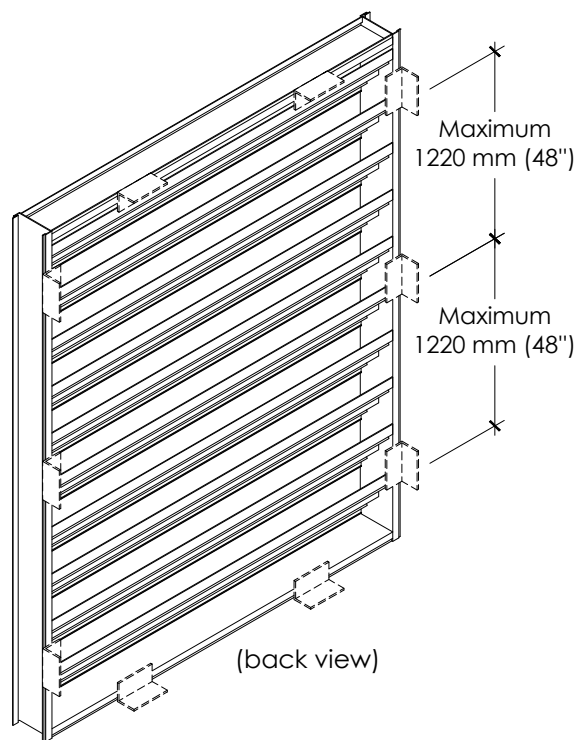
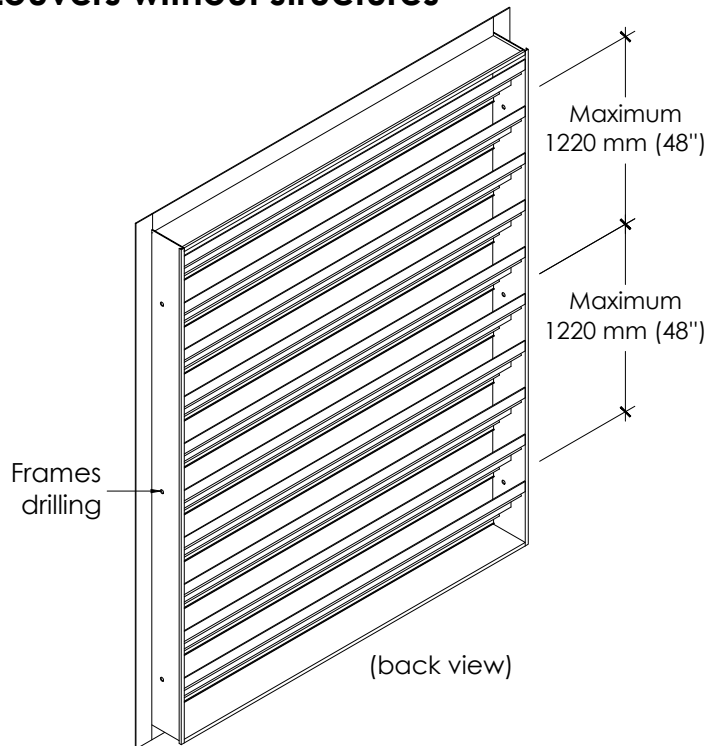


#### Louvers without structures

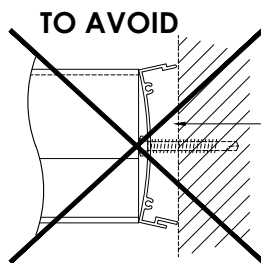
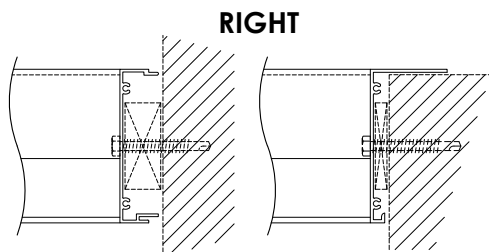


#### Option: Install using screws through the side frames

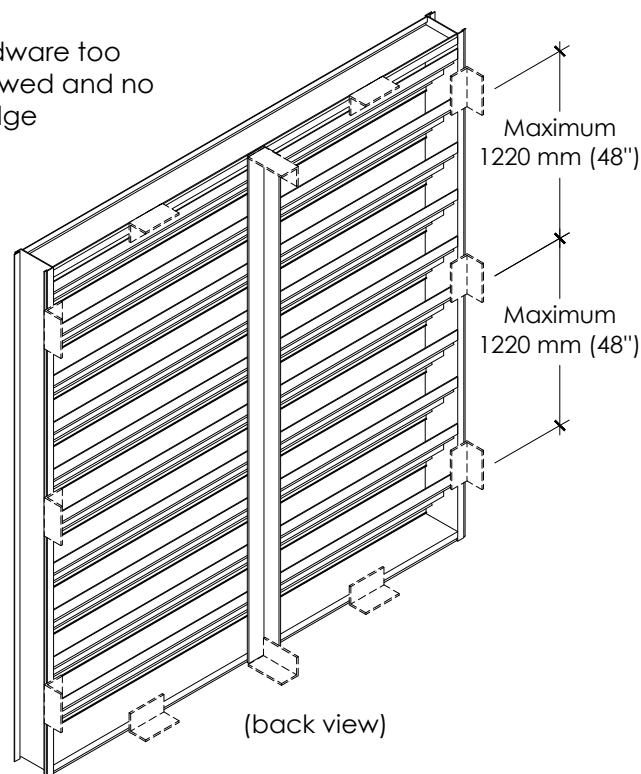
1. Drill the frames.
2. Put shims between the frames and the wall to prevent the frames from warping.
3. Use appropriate hardware (not provided).

#### Option: Install using attachment angles

1. Install attachment angles (not provided) at the rear of the frame or blades, at intervals of 1220 mm [48"] c/c.
2. Use appropriate hardware (not provided).



Hardware too screwed and no wedge



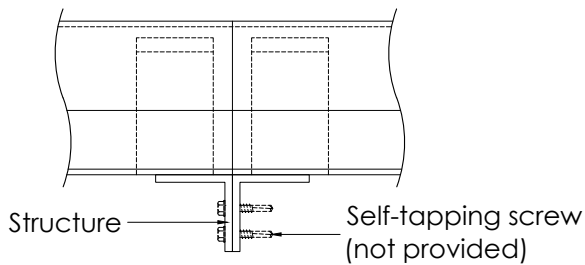
#### Louvers with rear structure

##### Install using attachment angles

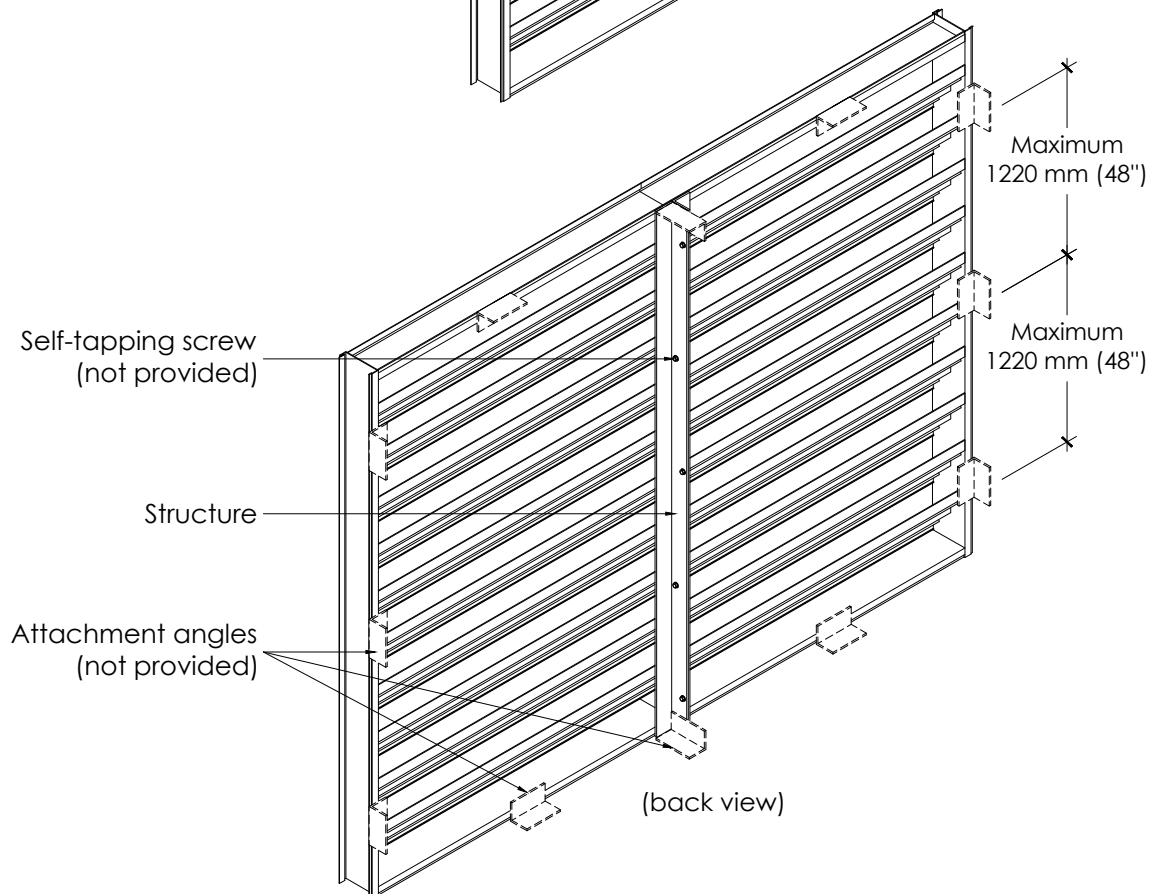
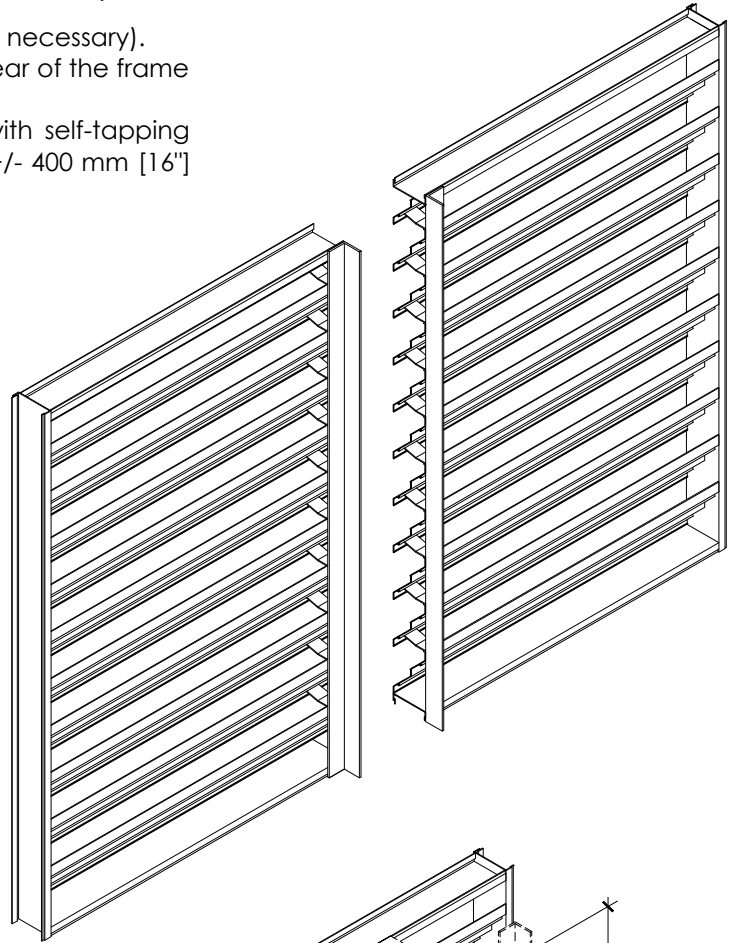
1. Install attachment angles (not provided) at the rear of the frame or blades, at intervals of 1220 mm [48"] c/c.
2. Use appropriate hardware (not provided).

#### Concealed mullion louvers (continuous louvers)

1. Install the first louver square and level (use shims if necessary).
2. Install attachment angles (not provided) at the rear of the frame or blades, at intervals of 1220 mm [48"] c/c.
3. Place the two structures together and fasten with self-tapping screws (not provided) at staggered intervals of +/- 400 mm [16"] c/c.

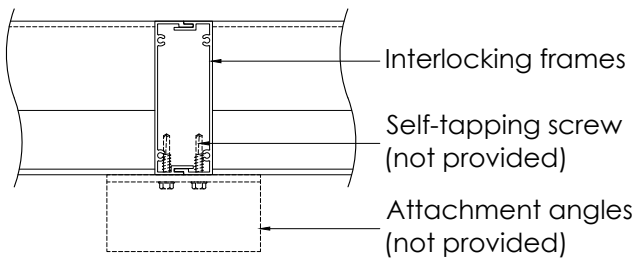


**Plan view**

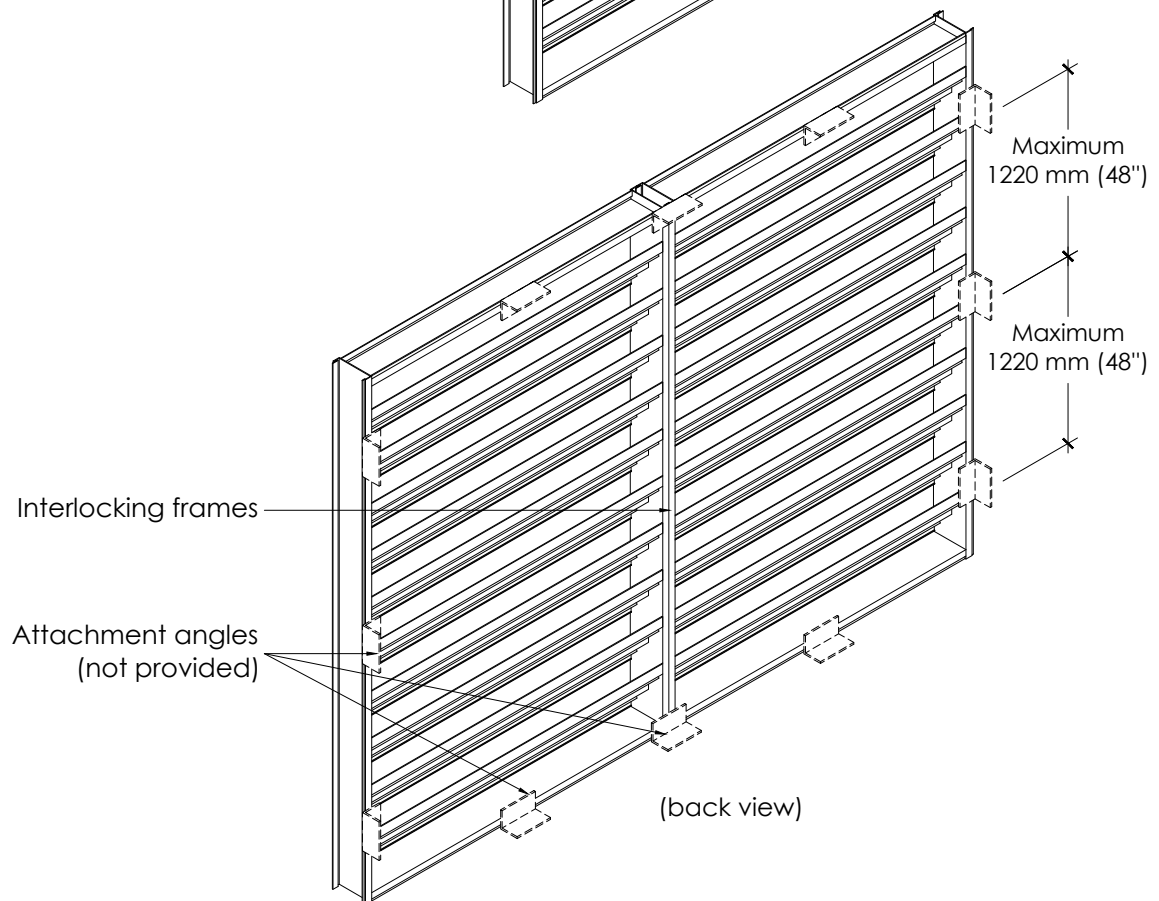
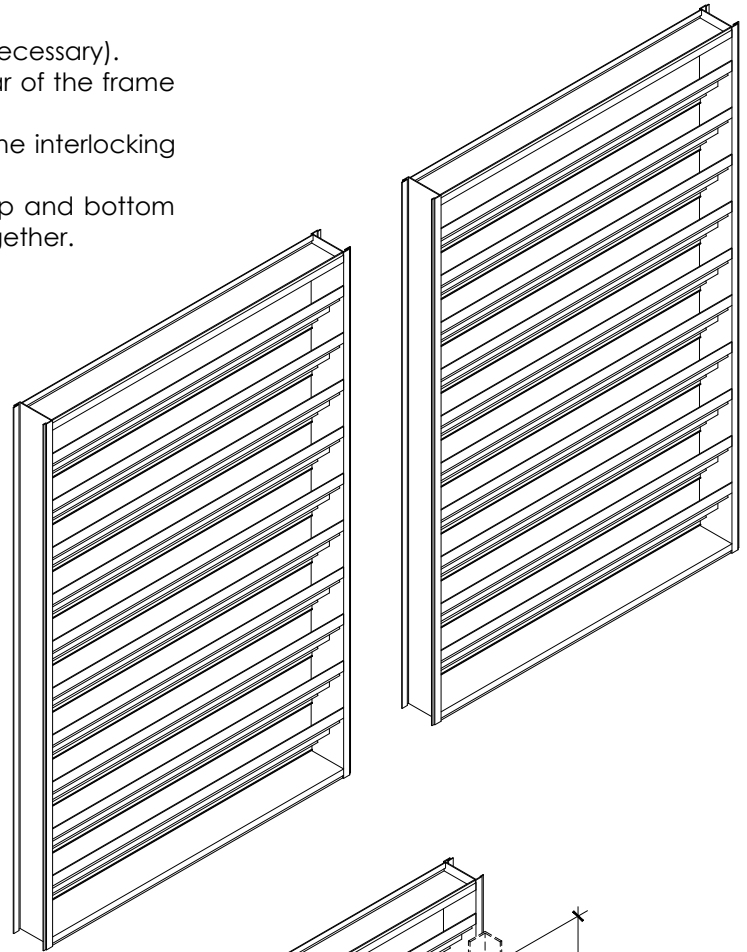


#### Visible mullion louvers (interlocking frames)

1. Install the first louver square and level (use shims if necessary).
2. Install attachment angles (not provided) at the rear of the frame or blades, at intervals of 1220 mm [48"] c/c.
3. Install the other louver sections, taking care to fit the interlocking frames well.
4. Install attachment angles (not provided) at the top and bottom of the interlocking frames to hold them securely together.



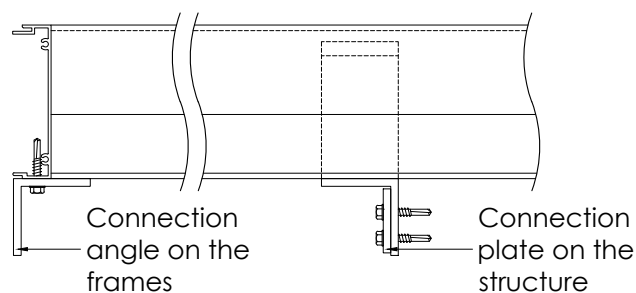
Plan view



#### Concealed mullion louvers

Louvers that come in 2 or more vertical sections must be assembled before installation.

1. Secure the angles and connection plates to the frames and rear structures with the hardware provided by Cométal or by the contractor.
2. Secure the louvers with attachment angles (not provided) around the entire perimeter and to each of the structures.



Plan view

